

PRODUCT INFORMATION PACKET



Model No: A6T34EC28C
Catalog No: 116187.00
..1/2HP..3450RPM.56.EPNV.208-
230/460V.3PH.60HZ.CONT.40C.1.0SF.ROUND.A6T34EC28C.....EXPLOSION-PROOF.AUTOMATIC.....
Explosion Proof



Regal and Leeson are trademarks of Regal Beloit Corporation or one of its affiliated companies.
©2018 Regal Beloit Corporation, All Rights Reserved. MC017097E





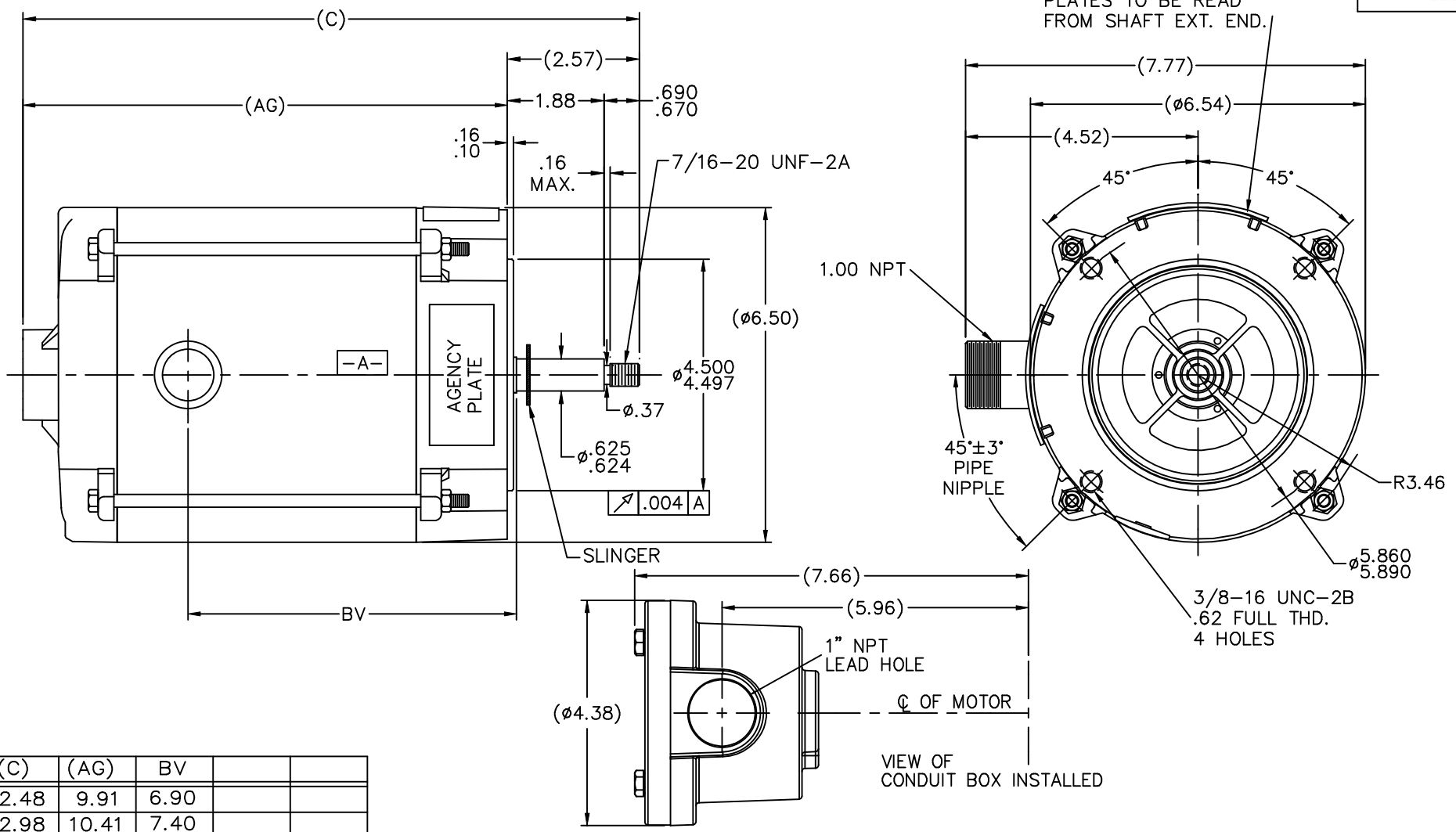
Nameplate Specifications

Output HP	0.50 Hp	Output KW	0.37 kW
Frequency	60 Hz	Voltage	208-230/460 V
Current	1.6-1.6/0.80 A	Speed	3450 rpm
Service Factor	1	Phase	3
Efficiency	80 %	Duty	Continuous
Insulation Class	B	Design Code	B
KVA Code	M	Frame	56J
Enclosure	Explosion Proof Non Ventilated	Overload Protector	Automatic
Ambient Temperature	40 °C	Drive End Bearing Size	6203
Opp Drive End Bearing Size	6203	UL	Recognized
CSA	Y	CE	N
IP Code	54		

Technical Specifications

Electrical Type	Squirrel Cage Induction Run	Starting Method	Across The Line
Poles	2	Rotation	Reversible
Mounting	Round	Motor Orientation	HORIZONTAL
Drive End Bearing	BALL	Opp Drive End Bearing	BALL
Frame Material	Rolled Steel	Shaft Type	J
Overall Length	12.98 in	Frame Length	6.81 in
Shaft Diameter	0.625 in	Shaft Extension	2.44 in
Assembly/Box Mounting	F1 ONLY		
Outline Drawing	B-107322LE-681	Connection Diagram	A-EE7335-LE

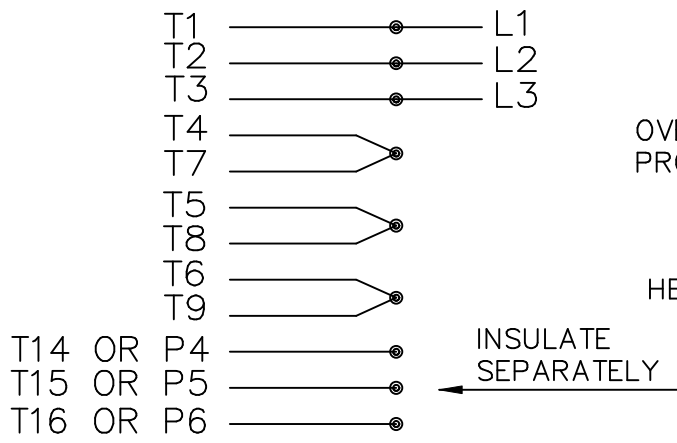
PLATES TO BE READ FROM SHAFT EXT. END.



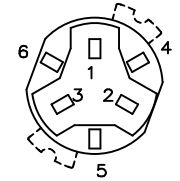
DASH	(C)	(AG)	BV		
631	12.48	9.91	6.90		
681	12.98	10.41	7.40		
731	13.48	10.91	7.90		
781	13.98	11.41	8.40		
831	14.48	11.91	8.90		
881	14.98	12.41	9.40		
931	15.48	12.91	9.90		
981	15.98	13.41	10.40		

TOLERANCES UNLESS SPECIFIED		DEC.		INCHES			ELECTRIC MOTORS GEARMOTORS AND DRIVES	DRAWN RAD 12/24/2007			
								CHK	RAD 12/24/2007		
		.X		±.1		TITLE OUTLINE - 'C' FACE 56 FR. - EXP. PR. NONVENT-JET PUMP		APPD VL 12/24/2007			
		.XX		±.03				SCALE 17-32			
		.XXX		±.005				REF			
		.XXXX		±.0005				FMF 116187.00			
NO.	REVISION	BY & DATE	CHK	ANG	±7'30"	FINISH	PREV				
	THIS DRAWING IN DESIGN AND DETAIL IS OUR PROPERTY AND MUST NOT BE USED EXCEPT IN CONNECTION WITH OUR WORK ALL RIGHTS OF DESIGN AND INVENTION ARE RESERVED THIS IS AN ELECTRONICALLY GENERATED DOCUMENT - DO NOT SCALE THIS PRINT		RFP	12/24/2007		CAD FILE 107322LE		SIZE B	DRAWING NO. 107322LE	PAGE OF	REV.
			DIST	WP							

HIGH VOLTAGE CONNECTIONS

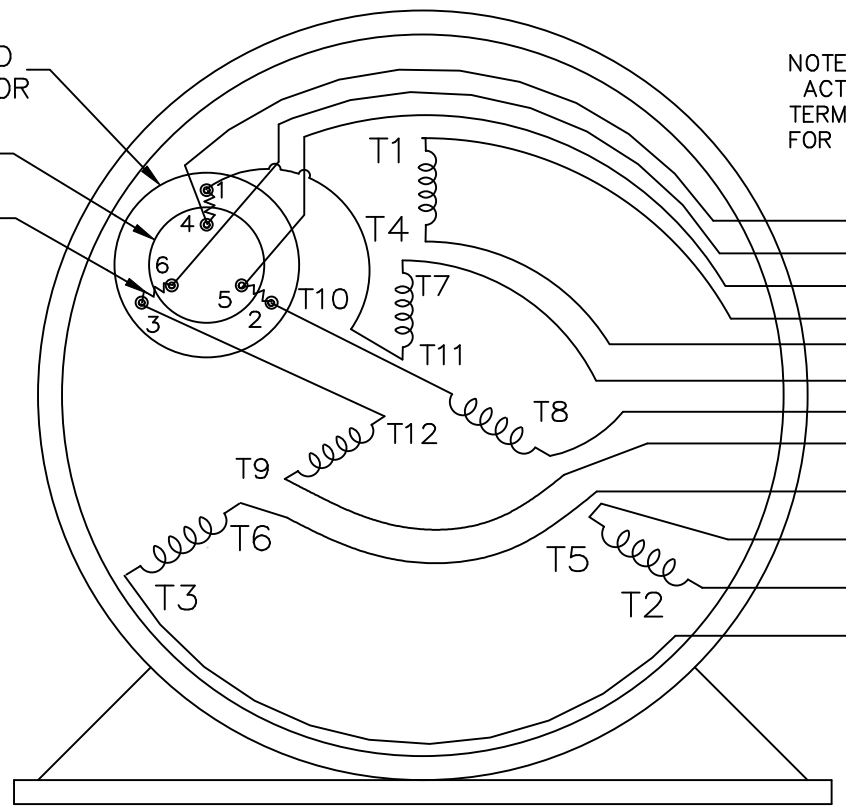


THREE PHASE – DUAL VOLTAGE MOTOR WITH OVERLOAD PROTECTOR



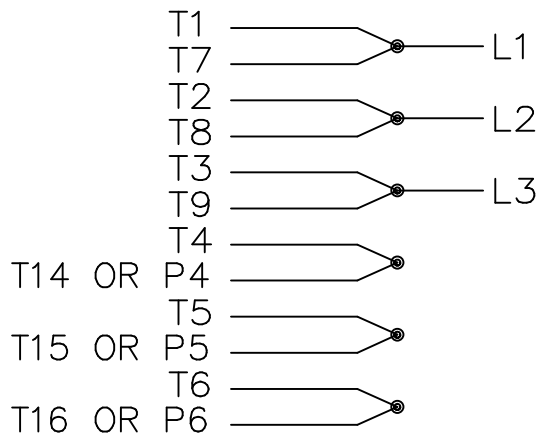
NOTE:
 ACTUAL PROTECTORS
 TERMINAL LOCATIONS
 FOR LEAD CONNECTIONS

OVERLOAD PROTECTOR
 DISC
 HEATER



T14 OR P4
 T16 OR P6
 T15 OR P5

LOW VOLTAGE CONNECTIONS



VIEW OF TERMINAL END

T2K
 T4D
 T6AN

				TOLERANCES UNLESS SPECIFIED		ELECTRIC MOTORS GEARMOTORS AND DRIVES	DRAWN NJS 04-20-2005	
				DEC.	INCHES		CHK ML 04-20-2005	
				.X	± -		APPD MJS 04-20-2005	
				.XX	± -		SCALE	
				.XXX	± -		REF	
				.XXXX	± -	MAT'L.		
NO.	REVISION	BY & DATE	CHK	ANG	± -	FINISH	PREV	
THIS DRAWING IN DESIGN AND DETAIL IS OUR PROPERTY AND MUST NOT BE USED EXCEPT IN CONNECTION WITH OUR WORK ALL RIGHTS OF DESIGN AND INVENTION ARE RESERVED THIS IS AN ELECTRONICALLY GENERATED DOCUMENT - DO NOT SCALE THIS PRINT				RFP	04-20-2005	CAD FILE EE7335_LE	SIZE A	DRAWING NO. EE7335-LE
				DIST	WP		PAGE	OF
								REV.



CERTIFICATION DATA SHEET

P.O. BOX 8003
WAUSAU, WI 54401-8003
PH: 715-675-3311

DATA VOLTS: 460

CONN. DIAGRAM: A-EET7335-LE
OUTLINE: B-107322LE-681
WINDING: Z12159

NONE 3

CAT #: 116187.00

TYPICAL MOTOR PERFORMANCE DATA

HP	KW	SYNC RPM	FL RPM	FRAME	ENCLOSURE	TYPE	KVA CODE	DESIGN	
0.5	0.37	3600	3510	56J	EPNV	TTR	M	B	
PH	HZ	VOLTS	AMPS	START TYPE	DUTY	INSL	S.F.	AMB	ELEV.
3	60/50	208-230/460#190/380	1.6-1.6/.8&1.4/.7	ACROSS THE LINE	CONT	B	1.15	40	3300
	F.L. EFF	80.0	3/4 LD EFF	75.3	1/2 LD EFF	68.0	GTD EFF	ELECT. TYPE	
	F.L. PF	78.0	3/4 LD PF	71.9	1/2 LD PF	62.0	77.0	SQ CAGE IND RUN	
	F.L. TORQUE	LR AMPS @ 460 V	L.R. TORQUE	B.D. TORQUE	F.L. RISE (°C)				
	192 LB-FT	6.4	646 LB-FT	336%	874 LB-FT	455%	34		
	PRESSURE @ 3	POWER	ROTOR WK ²	MAX. LOAD WK ²	SAFE STALL TIME	STARTS/HOUR	MOTOR WGT		
	999 DBA	1008 DBA	0.03 LB-FT ²	0 LB-FT ²	20 SEC.	0	28 LB.		

*** SUPPLEMENTAL INFORMATION ***

DE BRACKET TYPE	ODE BRACKET TYPE	MOUNT TYPE	MOTOR ORIENTATION	SEVERE DUTY	HAZARDOUS LOCATION	DRIIP COVER	SCREENS	PAINT
C-FACE	STANDARD	ROUND	HORIZONTAL	NO	DF CL IGR C&D CL II GH	NO	NONE	JE - LEESON (ENAM)
BEARINGS DE	GREASE	SHAFT TYPE	SPECIAL DE	SPECIAL ODE	SHAFT	MATERIAL	FRAME MATERIAL	
BALL BALL 6203	POLYREX EM	JET PUMP	NONE	NONE	416 STAINLESS (C-503)		ROLLED STEEL	

THERMOSTATS	PROTECTORS	WDG RTD's	BRG RTD's	THERMISTORS	CONTROL	SPACE HEATERS
NONE	AUTOMATIC	NONE	NONE	NONE	FALSE	NA
R1 (ohms/ph)	R2 (ohms/ph)	X1 (ohms/ph)	X2 (ohms/ph)	Xm (ohms/ph)	VIBRATION (in/sec)	FLOAT ODE
0	0	0	0	0	0.150	

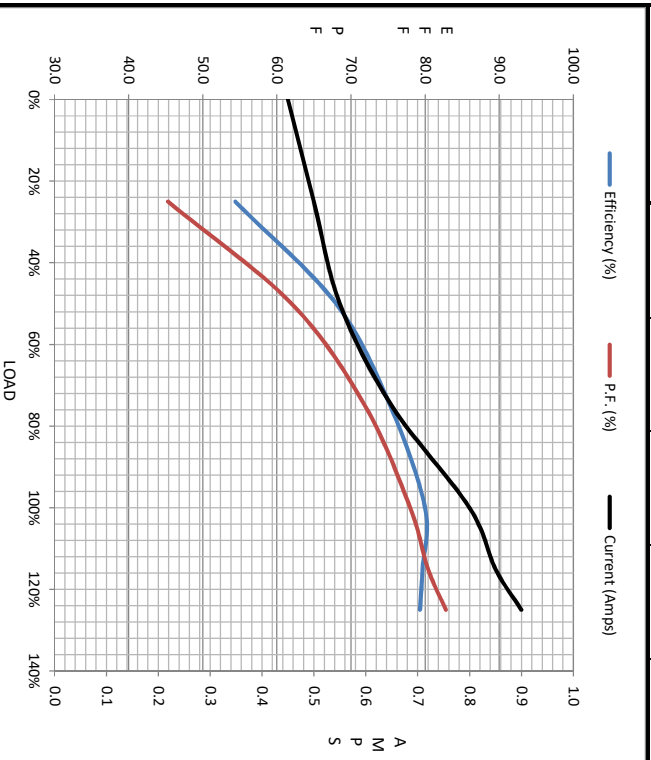
* N O T E S *	INVERTER TORQUE: NONE INV. HP SPEED RANGE: NONE	ENCODER: NONE NONE NONE	BRAKE: NONE NONE NONE	FT-LB: NA VOLTAGE: NONE	NONE NONE NONE	HZ:
---------------------------------	--	-------------------------------	-----------------------------	----------------------------	----------------------	-----

DATE:	1/17/2018	UL: Y-(LEESON UL REC)
-------	-----------	-----------------------



Motor Load Data						
Load	0%	25%	50%	75%	100%	LR
Current (Amps)	0.45	0.50	0.55	0.65	0.80	6.4
Torque (ft-lb)	0.00	47.6	95.3	144	192	3486
HPM	3600	3572	3553	3533	3510	0
Efficiency (%)		54.4	68.0	75.3	80.0	79.3
P.F. (%)	29.5	45.3	62.0	71.9	78.0	82.8

Motor Speed Data						Information Block																										
	LR	Pull-Up	BD	Rated	Idle	HP	Sync. RPM	Frame	Enclosure	Construction	Voltage	Frequency	Design	LR Code letter	Service Factor	Temp Rise @ FL	Duty	Ambient	Elevation	Rotor/Shaft wk ²	Ref Wdg	Sound Pressure @ 1M	VFD Rating	Outline Dwg	Conn. Diag	Additional Specifications:	R1	R2	X1	X2	Xm	
Speed (RPM)	0	170	2655	3510	3600	0.5	3600	56	EPNV	TTR	208-230/460#190/380	60	B	M	1.15	34	CONT	40	1,000	0.03	NONE	999	NONE	B-107322LE-681	A-EE7335-LE		0.0000	0.0000	0.0000	0.0000	0.0000	
Current (Amps)	6.4	6.4	4.1	0.80	0.45																											
Torque (ft-lb)	646	601	874	192	0.00																											



EQUIV CKT (OHMS / PHASE)					
R1	R2	X1	X2	Xm	
0.0000	0.0000	0.0000	0.0000	0.0000	

